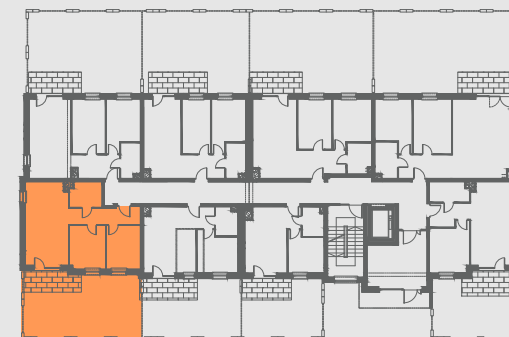
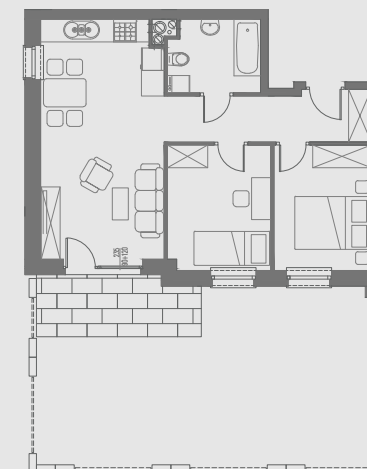


PARTER



MIESZKANIE NR 3



| | |
|---------------------|----------------------------|
| 1. przedpokój | 6,98 m ² |
| 2. salon | 20,27 m ² |
| 3. pokój | 8,48 m ² |
| 4. pokój | 8,98 m ² |
| 5. łazienka | 4,61 m ² |
| 6. taras + ogródek | 42,94 m ² |
| POWIERZCHNIA | 49,32 m² |

