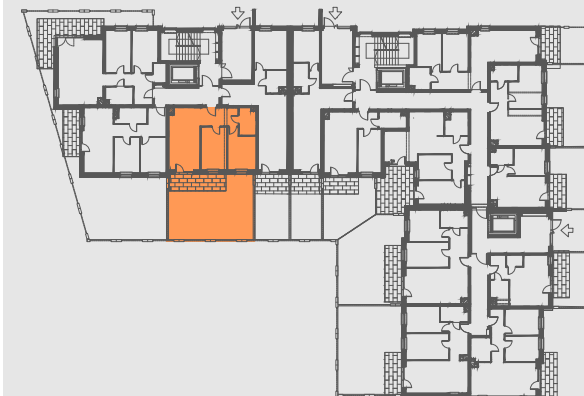
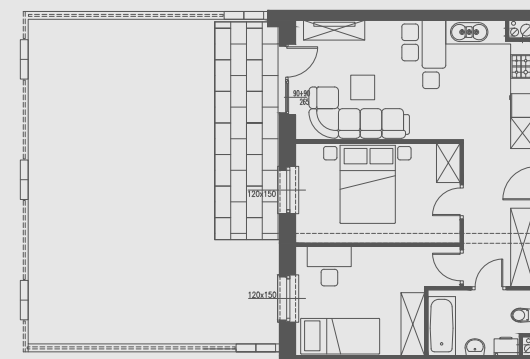


PARTER



MIESZKANIE NR 52



|                     |                            |
|---------------------|----------------------------|
| 1. przedpokój       | 6,64 m <sup>2</sup>        |
| 2. salon            | 17,78 m <sup>2</sup>       |
| 3. pokój            | 9,93 m <sup>2</sup>        |
| 4. pokój            | 10,55 m <sup>2</sup>       |
| 5. łazienka         | 4,29 m <sup>2</sup>        |
| 6. taras + ogródek  | 52,25 m <sup>2</sup>       |
| <b>POWIERZCHNIA</b> | <b>49,19 m<sup>2</sup></b> |

